

# **Major va minorning asosiy uchtovushliklari**

# Major va minorning asosiy uchtovushliklari

- Major va minorning asosiy uchtovushliklari
- Tonika uchtovushligi,
- Subdominanta uchtovushligi
- Dominanta uchtovushligi
- Major va minorning yondosh uchtovushliklari
- Tabiiy va garmonik major hamda minor pog'onalaridan tuzilgan uchtovushliklar

# Major va minorning asosiy uchtovushliklari

Major va minorning barcha pog'onalaridan uchtovushliklar tuzilishi mumkin.

Tabiiy major pog'onalaridan uchtovushlik tuzilganda,

ulardan uchta major ekanligini ko'ramiz. Bular 1, 4 va 5–pog'onalardagi uchtovushliklardir.

Har bir uchtovushlik mustaqil nomga ega bo'ladi.

1 - pog'ona uchtovushligi **tonika** uchtovushligi;

4 –pog'ona uchtovushligi **subdominanta** uchtovushligi;

5 – pog'ona uchtovushligi esa **dominanta** uchtovushligi deyiladi.

Bular major uchtovushliklari bo'lganligi sababli major ladi uchun xarakterlidir.

Bu uchtovushliklar boshqa uchtovushliklarga qaraganda *lad funksiyalarini,*

ya'ni, turg'un va noturg'un tovushlar munosabatini ko'proq ifodalaydi.

Shuning uchun ham ular asosiy uchtovushliklar deb ataladi va katta **T**, **S**, **D** harflari bilan belgilanadi.

# Do major C-dur

The image displays the C major scale in treble clef. The notes are arranged on a five-line staff. Above the staff, the letters T, S, and D are positioned above the first, fourth, and fifth notes respectively. Below the staff, Roman numerals I through VII are placed under each note. The final note, C, is enclosed in a circle with a vertical line through it, and the numeral (I) is placed below it. The notes are: C (I), D (II), E (III), F (IV), G (V), A (VI), B (VII), and C (I).

Scale Degree	Letter	Notes	Roman Numeral
I	T	C	I
II		D	II
III		E	III
IV	S	F	IV
V	D	G	V
VI		A	VI
VII		B	VII
(I)		C	(I)

Minorning asosiy uchtovushliklari esa kichik harflar bilan yoziladi: **t, s, d.**

Lya minor a – moll

t s d

I II III IV V VI VII (I)

Garmonik ko'inishdagi minorda asosiy uchtovushliklarning tuzilishi tabiiy major va minordagidan farq qiladi.

Majorning 6-pog'onasi pasaytirilganda minor subdominanta uchtovushligi hosil bo'ladi va garmonik majorning yanada mayin eshitilishiga yordam beradi.

Minorning 7-pog'onasi ko'tarilganda major dominantaga uchtovushligi hosil bo'ladi.

a - moll t - D - t

I V<sub>6</sub>/<sub>4</sub> I I<sub>6</sub> V<sub>6</sub>/<sub>4</sub> I<sub>6</sub> I<sub>64</sub> V I<sub>64</sub>

a - moll

I IV<sub>64</sub> I I<sub>6</sub> IV I<sub>6</sub> I<sub>64</sub> IV<sub>6</sub> I<sub>64</sub>

C - dur T - S - D - T

I IV<sub>64</sub> V<sub>6</sub> I I<sub>6</sub> IV V<sub>6</sub>/<sub>4</sub> I<sub>6</sub> I<sub>64</sub> IV<sub>6</sub> V I<sub>64</sub>

a - moll t - s - D - t

I IV<sub>64</sub> V<sub>6</sub> I I<sub>6</sub> IV V<sub>6</sub>/<sub>4</sub> I<sub>6</sub> I<sub>64</sub> IV V I<sub>64</sub>

C - dur T - D - T

I V<sub>6</sub> I I<sub>6</sub> V<sub>64</sub> I<sub>6</sub> I<sub>64</sub> V I<sub>64</sub>

C - dur T - S - T

I IV<sub>64</sub> I I<sub>6</sub> IV I<sub>6</sub> I<sub>64</sub> IV<sub>6</sub> I<sub>64</sub>

Tovushqatorning asosiy uchtovushliklar pog'onalaridan tashqari, barcha (2, 3, 6, 7) pog'onalari **yondosh pog'onalar** deyiladi.

Ular ladning asosiy uchtovushliklariga nisbatan ikkinchi darajali ahamiyatga egadir.

# C-Dur

A musical staff in treble clef showing the seven chords of C major (C-Dur). The chords are represented by their Roman numerals: I, II, III, IV, V, VI, VII. Each chord is shown with its constituent notes on the staff, with stems and beams. The notes are: I (C4, E4, G4), II (D4, F4, A4), III (E4, G4, B4), IV (F4, A4, C5), V (G4, B4, D5), VI (A4, C5, E5), VII (B4, D5, F5).

- I
- II
- III
- IV
- V
- VI
- VII
- (I)

Tabiiy majorda *uchta minorli va bitta kamaytirilgan uchto'vushlik yondosh uchto'vushlik bo'ladi* (7 – pog'ona).

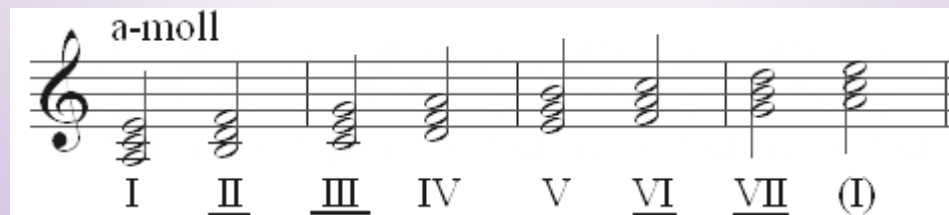
**C-Dur**



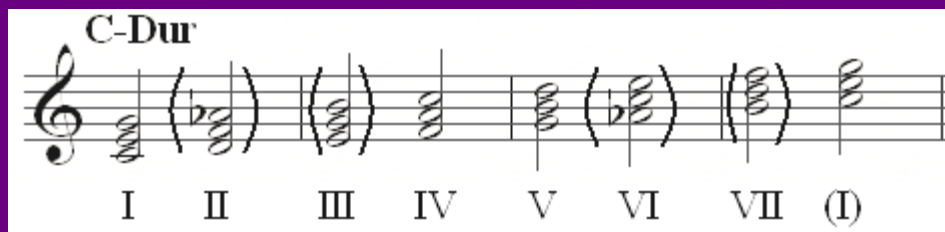
kich. ucht. kich. ucht. kich. ucht. kam. ucht.

The image shows a musical staff in C major (C-Dur) with a treble clef. It contains four chords, each represented by a vertical line with a wavy line indicating the chord's structure. The chords are labeled as follows: 'kich. ucht.' (minor triad), 'kich. ucht.' (minor triad), 'kich. ucht.' (minor triad), and 'kam. ucht.' (diminished triad).

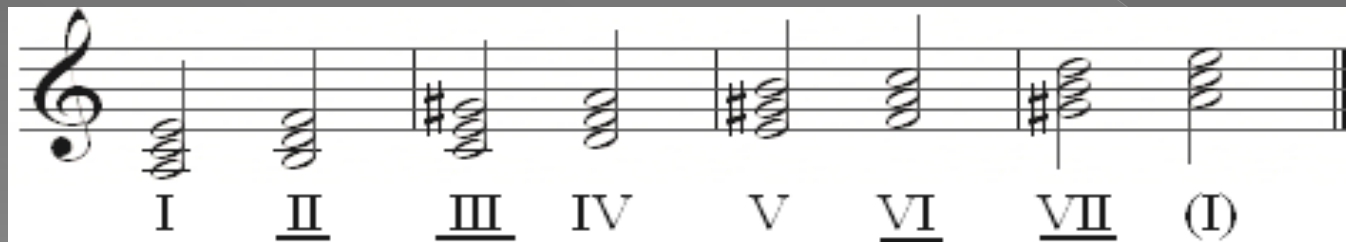
Tabiiy minorda *uchta majorli*  
*va bitta kamaytirilgan*  
*uchtovushlik yondosh*  
*uchtovushlik bo'ladi* (2 –  
pog'ona).



Garmonik majorda ikki va yettinchi pog'onalarda 2 ta kamaytirilgan, 6 – pog'onada birta orttirilgan uchtovushlik hosil bo'ladi.



Garmonik minorda: oltinchi pog'onada birta majorli, 2 va 7 – pog'onalarda ikkita kamaytirilgan va uchinchi pog'onada – birta orttirilgan uchtovushlik hosil bo'ladi.



# Uchtovushliklar soni quyidagilardan iborat bo'ladi:

Tabiiy major yoki  
minorda – 3 ta majorli, 3  
ta minorli va bitta  
kamaytirilgan  
uchtovushlik bo'ladi.

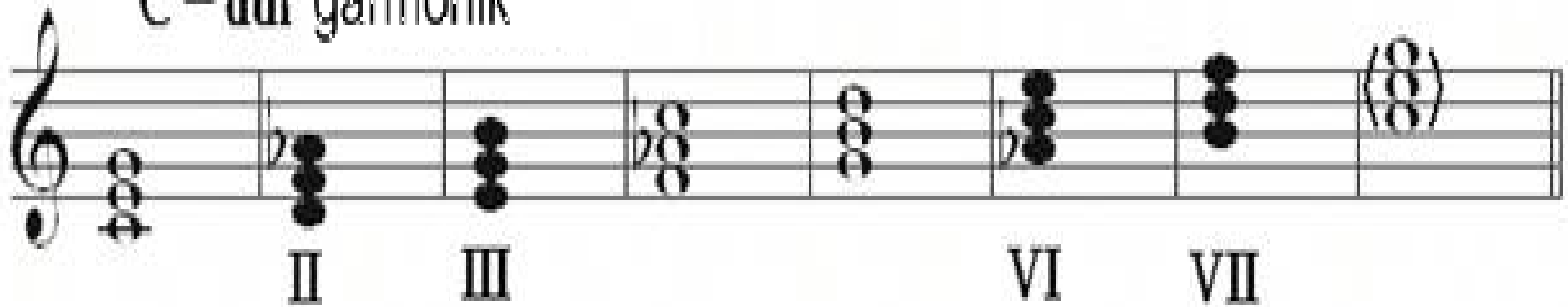
Garmonik major yoki  
minorda 2 ta majorli, 2  
ta minorli, 2 ta  
kamaytirilgan va 1 ta  
orttirilgan uchtovushlik;

C - dur tabiiy



A musical staff in treble clef showing the natural C major scale. The notes are C, D, E, F, G, A, B, and C. The notes are represented by black dots on the staff lines. Below the staff, the Roman numerals II, III, VI, and VII are placed under the second, third, sixth, and seventh notes respectively. The final C note is enclosed in a circle.

C - dur garmonik



A musical staff in treble clef showing the harmonic C major scale. The notes are C, D, E, F, G, A, B, and C. The notes are represented by black dots on the staff lines. Below the staff, the Roman numerals II, III, VI, and VII are placed under the second, third, sixth, and seventh notes respectively. The final C note is enclosed in a circle.

# a - moll tabiiy

Musical staff for a - moll tabiiy. The staff shows the following chords from left to right: I (C4, E4, G4), II (D4, F4, A4), III (E4, G4, B4), IV (F4, A4, C5), V (G4, B4, D5), VI (A4, C5, E5), VII (B4, D5, F5), and VIII (C5, E5, G5). The chords are represented by black dots on the staff lines.

# a - moll garmonik

Musical staff for a - moll garmonik. The staff shows the following chords from left to right: I (C4, E4, G4), II (D4, F4, A4), III (E4, G4, B4 with a sharp sign), IV (F4, A4, C5), V (G4, B4, D5 with a sharp sign), VI (A4, C5, E5), VII (B4, D5, F5 with a sharp sign), and VIII (C5, E5, G5). The chords are represented by black dots on the staff lines.

Sifrovka bo'yicha akkordlar ketma-ketligini fortepianoda chalish:

C-Dur

T S D T T S D T T S D T T S D T