

# **Garmonik va melodik major**


# Garmonik va melodik major

- **Garmonik va melodik major**
- Minor ladi,
- tabiiy minor gammasi,
- kichik tertsiya, katta tertsiya,
- sof kvinta intervali

## Garmonik va melodik major

Ayrim musiqa asarlarida VI pog'onasi pasaytirilgan major ladi qo'llanilganligini uchratish mumkin.

VI pog'onani pasaytirish lozim bo'lganda, pasaytirish belgisi matnda nota oldidan qo'yiladi va tasodifiy belgi deb ataladi.



Ayrim musiqa  
asarlarda VI  
pog'onasi  
pasaytirilgan  
major ladi  
qo'llanilganligini  
uchratish  
mumkin.

VI pog'onani  
pasaytirish lozim  
bo'lganda,  
pasaytirish belgisi  
matnda nota  
oldidan qo'yiladi  
va tasodifiy belgi  
deb ataladi.

# Masalan:

A musical staff in treble clef showing a scale with Roman numeral labels below each note. The notes are: C (I), D (II), E (III), F (IV), G (V), A (VI), B (VI), and C (I). A bracket labeled "opt. 2" spans the interval between the two A notes (VI).

I II III IV V VI VI (I)

Garmonik major gammersida  
bosqichlar intervali quyidagi  
tartibda joylashadi:

kat.2,

kat. 2,

kich.2,

kat.2,

kich.2,

***ort.2,***

kich.  
2.

Garmonik major gammasining xarakterli xususiyatlaridan biri oltinchi va yettinchi pog'onalar orasida *orttirilgan sekundaning* hosil bo'lishidir.



Ushbu orttirilgan sekundaning ifodalanishi musiqa mazmunida o'ziga xoslikni hosil qiladi va musiqaning jozibadorligini oshiradi.

# Гармоник мажор тоналшқлари

C-Dur                      G-Dur                      D-Dur



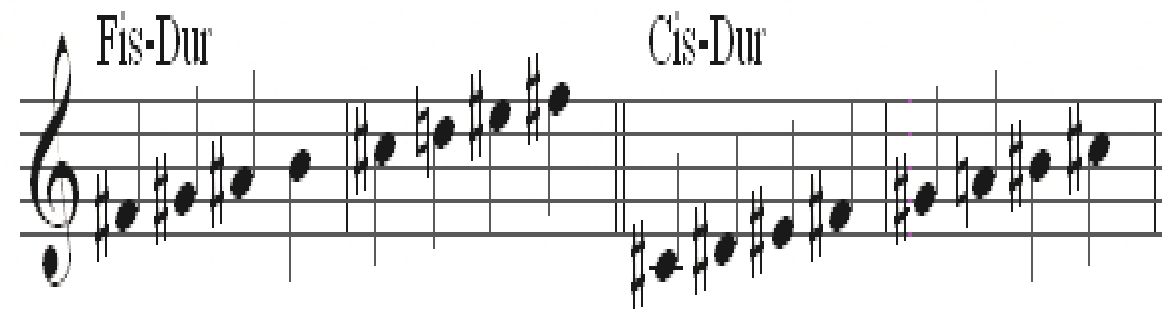
This block shows the first three major scales: C-Dur, G-Dur, and D-Dur. Each scale is written on a single treble clef staff. The C-Dur scale starts on middle C and follows the natural sequence of notes. The G-Dur scale starts on G4 and includes one sharp (F#). The D-Dur scale starts on D4 and includes two sharps (F# and C#). Vertical bar lines separate the three scales.

A-Dur                      E-Dur                      H-Dur



This block shows the next three major scales: A-Dur, E-Dur, and H-Dur. Each scale is written on a single treble clef staff. The A-Dur scale starts on A4 and includes two sharps (F# and C#). The E-Dur scale starts on E4 and includes three sharps (F#, C#, and G#). The H-Dur scale starts on B4 and includes four sharps (F#, C#, G#, and D#). Vertical bar lines separate the three scales.

Fis-Dur                      Cis-Dur



This block shows the final two major scales: Fis-Dur and Cis-Dur. Each scale is written on a single treble clef staff. The Fis-Dur scale starts on F#4 and includes five sharps (F#, C#, G#, D#, and A#). The Cis-Dur scale starts on C#5 and includes six sharps (F#, C#, G#, D#, A#, and E#). Vertical bar lines separate the two scales.

F-Dur                      B-Dur                      Es-Dur

This block contains the first three scales of the circle of fifths: F-Dur, B-Dur, and Es-Dur. Each scale is written on a single treble clef staff. The F-Dur scale starts on F4 and consists of the notes F, G, A, Bb, C, D, E, F. The B-Dur scale starts on B3 and consists of the notes B, C, D, Eb, F, G, A, B. The Es-Dur scale starts on E3 and consists of the notes E, F, G, Ab, B, C, D, E. Each scale is separated from the next by a double bar line.

As-Dur                      Des-Dur                      Ges-Dur

This block contains the next three scales of the circle of fifths: As-Dur, Des-Dur, and Ges-Dur. Each scale is written on a single treble clef staff. The As-Dur scale starts on A3 and consists of the notes A, B, C, Db, D, E, F, A. The Des-Dur scale starts on D3 and consists of the notes D, E, F, G, Ab, Bb, C, D. The Ges-Dur scale starts on G3 and consists of the notes G, A, B, C, D, Eb, F, G. Each scale is separated from the next by a double bar line.


Ces-Dur

This block contains the final scale of the circle of fifths: Ces-Dur. It is written on a single treble clef staff. The scale starts on C3 and consists of the notes C, D, E, F, G, A, B, C. The scale ends with a double bar line.

Musiqa amaliyotida melodik major garmonik majorga nisbatan kam uchraydi.



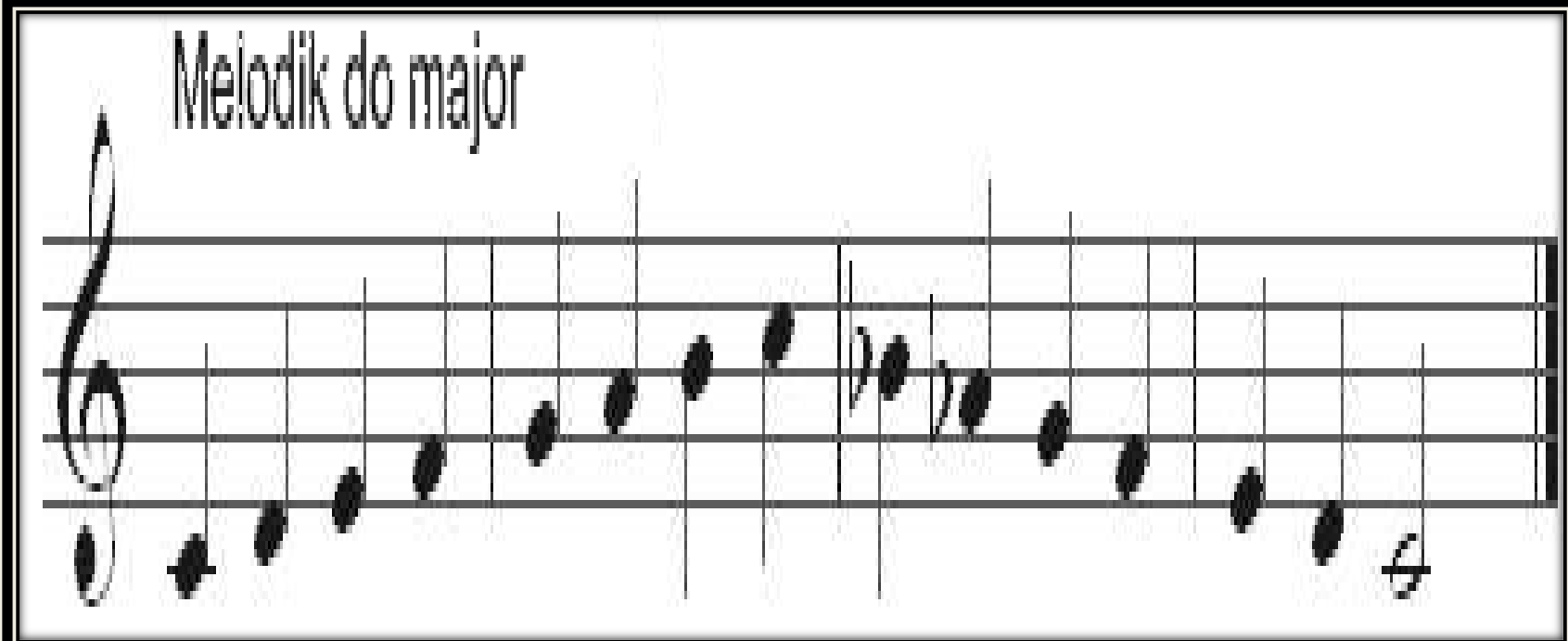
Melodik majorda VI va VII pog'onalar pasaytiriladi,



xarakteri bo'yicha melodik major tabiiy minorga o'xshash bo'lib eshitaladi hamda kuyning pastga tomon harakatida qo'llaniladi.

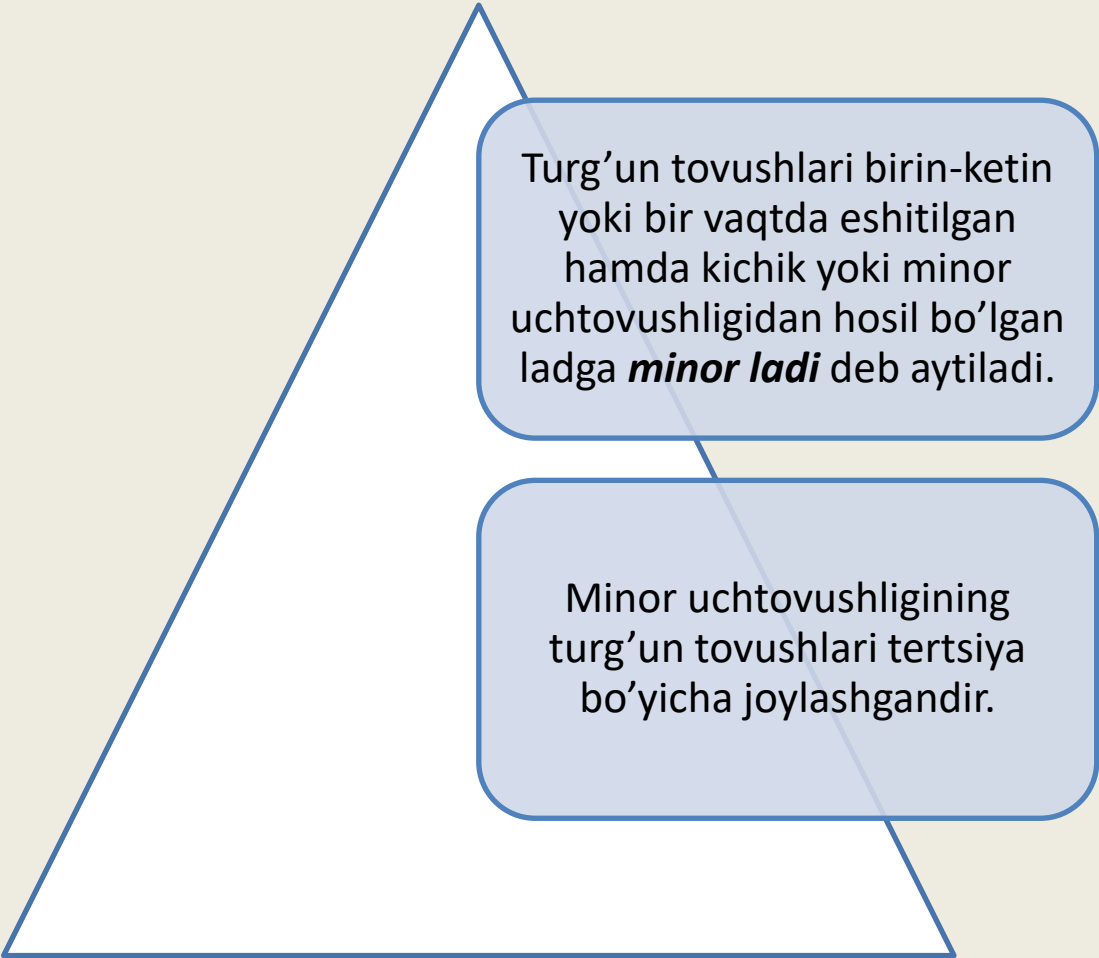
# Masalan:

Melodik do major



The image shows a musical staff with a treble clef and a key signature of one sharp (F#). The title "Melodik do major" is written above the staff. The melody consists of the following notes: D4 (quarter), E4 (quarter), F#4 (quarter), G4 (quarter), A4 (quarter), B4 (quarter), C5 (quarter), B4 (quarter), A4 (quarter), G4 (quarter), F#4 (quarter), E4 (quarter), D4 (quarter), and a final D4 (quarter) with a fermata. The staff is enclosed in a black border.

# Minor ladi.



Turg'un tovushlari birin-ketin yoki bir vaqtda eshitilgan hamda kichik yoki minor uchtovushligidan hosil bo'lgan ladga **minor ladi** deb aytiladi.

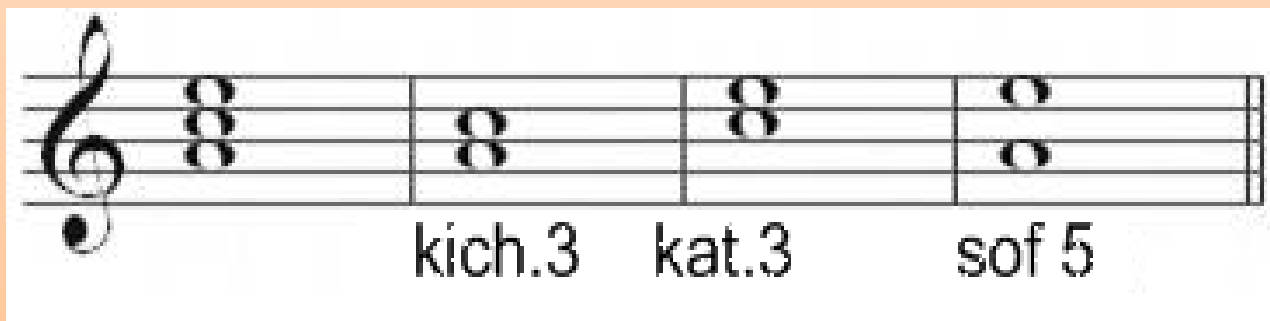
Minor uchtovushligining turg'un tovushlari tertsiya bo'yicha joylashgandir.

Minor ladi harfiy tuzilma bo'yicha *moll* so'zi bilan yoziladi. Masalan:

lya minor  
yoki *a-moll*,

do minor  
yoki *c-moll*.

- Birinchi va uchinchi pog'onalar orasida *kichik tertsiya*, uchinchi va beshinchi pog'onalar orasida esa *katta tertsiya* mavjuddir. Minor uchtovushligining ikki chetidagi tovushlar *sof kvinta* intervalini hosil qiladi:



Tabiiy minor gammasida  
sekundalarning joylashishi quyidagicha  
bo'ladi:

**kat.2,**

**kich.2,**

**kat.2,**

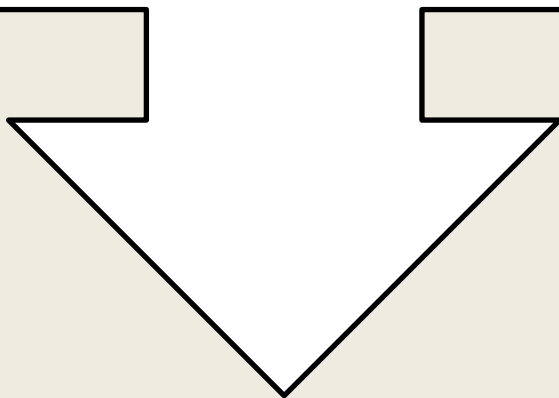
**kat.2,**

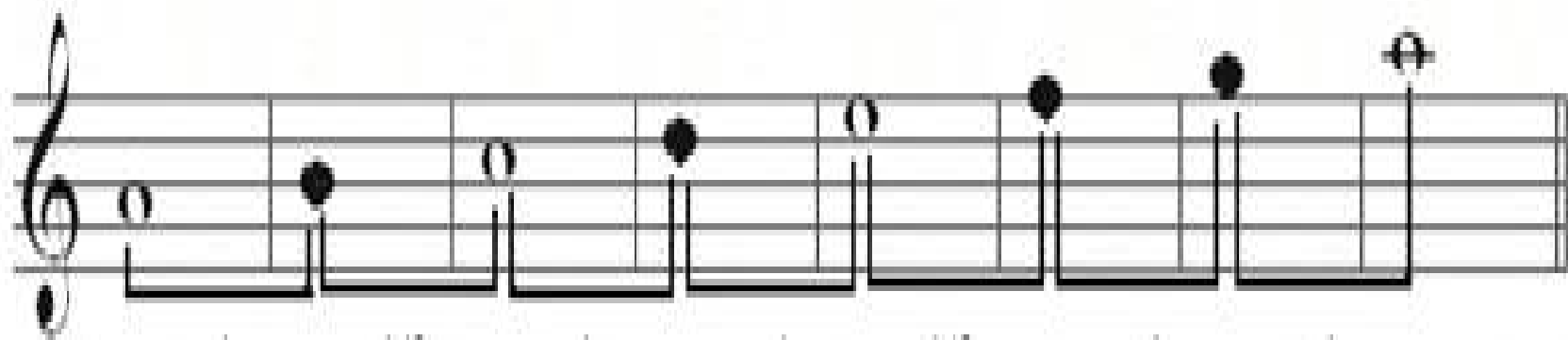
**kich.2,**

**kat.2,**

**kat.2.**

Major gammasi pog'onalari qanday raqamlar bilan belgilansa va qanday atalsa, tabiiy minor gammasi pog'onalari ham shunday belgilanadi va nomlanadi:





Tonlar:

1      1/2      1      1      1/2      1      1

pog'o -  
nalar:

I      II      III      IV      V      VI      VII      (I)

tabiiy a-moll      tabiiy d-moll      tabiiy g-moll

This block contains the first three natural minor scales. Each scale is written on a single treble clef staff. The a-moll scale starts on A4, the d-moll scale on D4, and the g-moll scale on G4. The notes are: a-moll (A, B, C, D, E, F, G), d-moll (D, E, F, G, A, B, C), and g-moll (G, A, B, C, D, E, F).

tabiiy e-moll      tabiiy f-moll      tabiiy b-moll

tabiiy e-moll      tabiiy h-moll      tabiiy fis-moll      tabiiy

cis-moll      tabiiy gis-moll      tabiiy dis-moll      tabiiy ais-moll

This block contains the remaining seven natural minor scales, arranged in two rows. The first row includes e-moll (E, F, G, A, B, C, D), f-moll (F, G, A, B, C, D, E), and b-moll (B, C, D, E, F, G, A). The second row includes e-moll (E, F, G, A, B, C, D), h-moll (E, F, G, A, B, C, D), fis-moll (F, G, A, B, C, D, E), cis-moll (C, D, E, F, G, A, B), gis-moll (G, A, B, C, D, E, F), dis-moll (D, E, F, G, A, B, C), and ais-moll (A, B, C, D, E, F, G). The scales are written on treble clef staves with various key signatures.

tabiiy es-moll      tabiiy as-moll

This block contains the final two natural minor scales. The es-moll scale (E-flat, F, G, A, B-flat, C, D) and the as-moll scale (A-flat, B-flat, C, D, E-flat, F, G) are written on a single treble clef staff. The notes for es-moll are: E-flat, F, G, A, B-flat, C, D. The notes for as-moll are: A-flat, B-flat, C, D, E-flat, F, G.