

Tonalliklar.

Tonalliklar.

- ▶ Diezli va bemolli major tonalliklari.
- ▶ Kvinta davrasi.
- ▶ Major tonalliklari engarmonizmi

Tonalliklar.

Lad o'rnashgan
pardalar yoki
balandliklar
tonallik deyiladi.

Har bir
tonallikning
nomi tonika
sifatida qabul
qilingan tovush
nomiga
asoslangandir.

Tonallik nomi
lad bilan tonika
iborasidan, ya'ni
major so'zidan
kelib chiqadi.

Masalan:

yoki G – dur va h.k.

do major

sol major

yoki katta S – dur
(harfiy tuzilma
bo'yicha),

Major
ladida do
tovushida
n tuzilgan
tonallik
do major
deyiladi.

Musiq*a* ijrochiligida *yettita diyezli* va *yettita bemolli* tonalliklar qo'llaniladi.

Bu tonalliklarning al'teratsiya belgilari kalitdan so'ng yozilib,

kalit yonida yoziladigan belgilar deb ataladi.



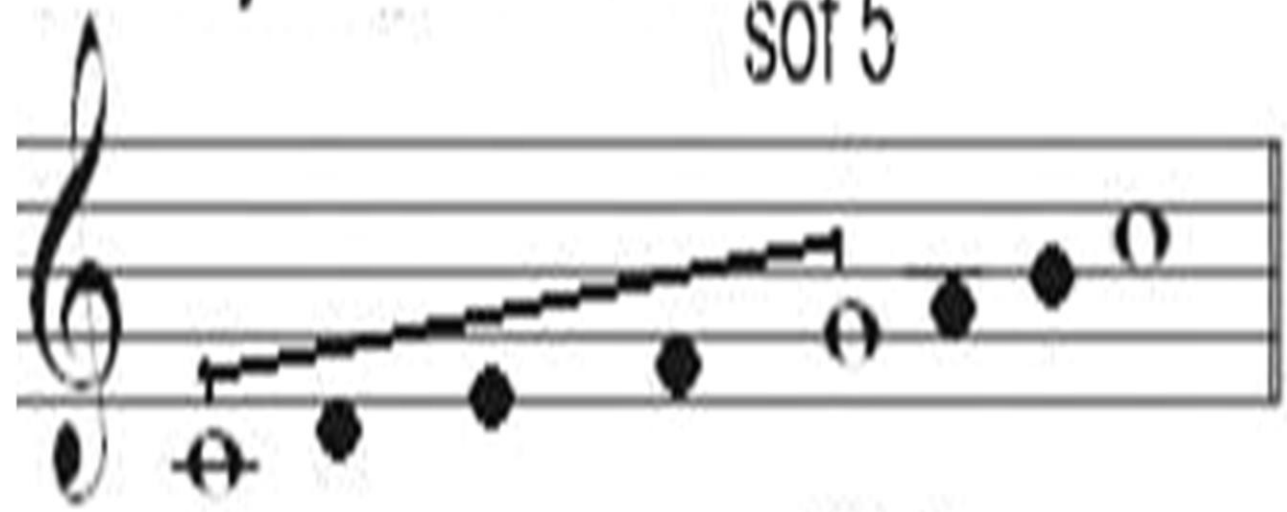
Bir–biridan birta kalit belgisi bilan farq qiladigan tonalliklar,

ularning har birida oltitadan o'xshash tovushlar bo'lganligi uchun yondosh tonalliklarga kiradi.

Do major tonalligida sol major yondosh bo'ladi.

Sol majorning birinchi pog'onasi do majordan sof kvinta yuqorida joylashadi:

Do major C – dur
sof 5



I

V=I-pog'ona sol majorda

Har bir yangi gamma o'zidan oldingi tonallikning beshinchi pog'onasidan, ya'ni, sof kvintadan tuziladi va buning natijasida biz barcha diyezli major tonalliklariga ega bo'lamiz.

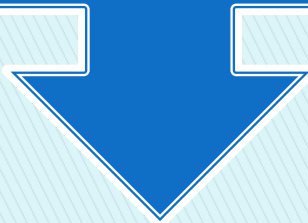
Bu xildagi har bir gammaning VII pog'onasida, kalit yonida yoziladigan yangi belgisi – diyez hosil bo'laveradi va ular birin–ketin yetti belgigacha borib etadi.

Besh, olti va yetti diyezli major tonalliklarining har biri beshtadan yettitagacha bemol belgisi bo'lgan tonalliklarning bittasiga engarmonik jihatdan tengdir va aksincha.

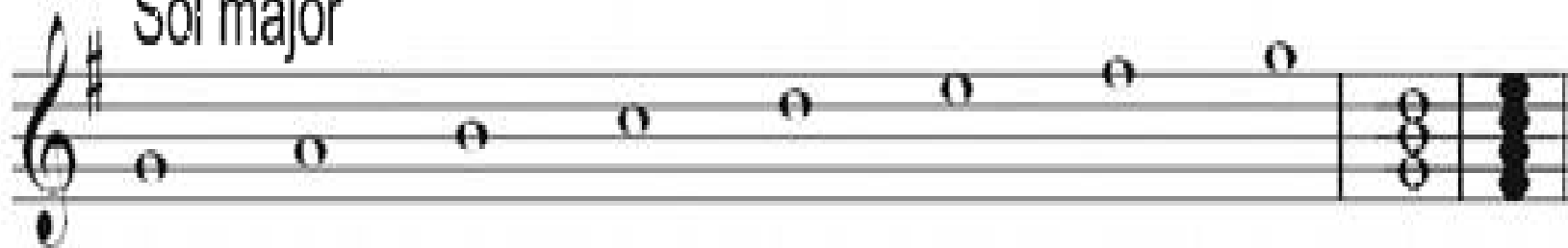


Balandligi bir xil, lekin yozilishi va nomi turlicha bo'lgan tonalliklarga **engarmonik teng tonalliklar** deb ataladi.

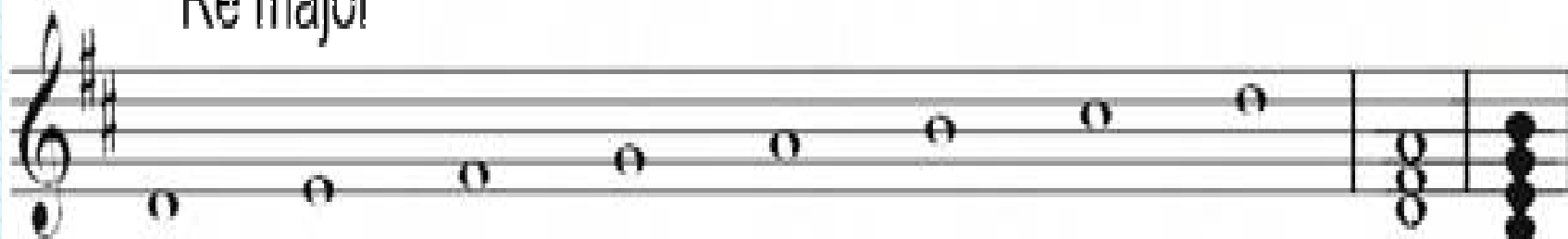
Barcha diyezli tonalliklarning yondosh tartibda joylashuvi quyidagi diyezli major tonalliklarini hosil qiladi:



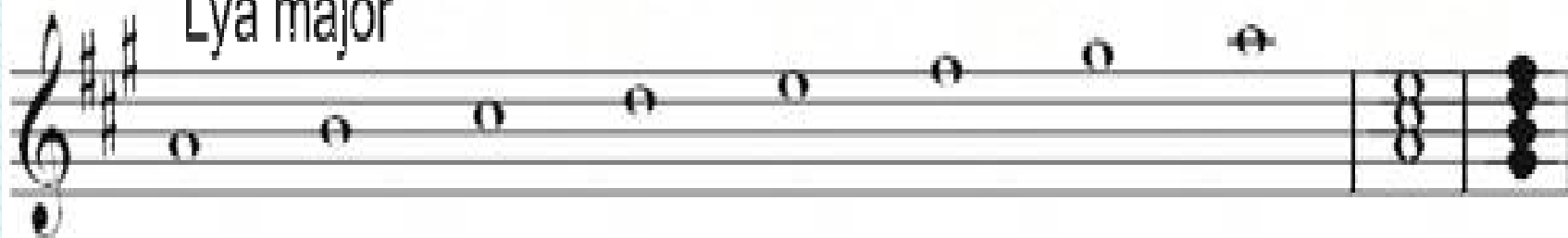
Sol major



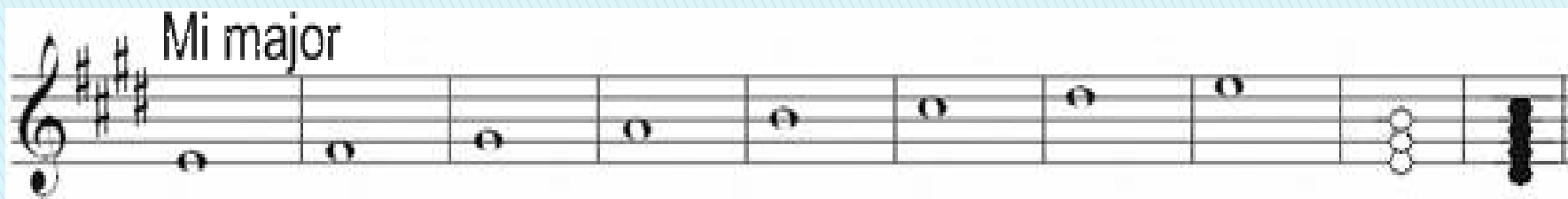
Re major



Lya major

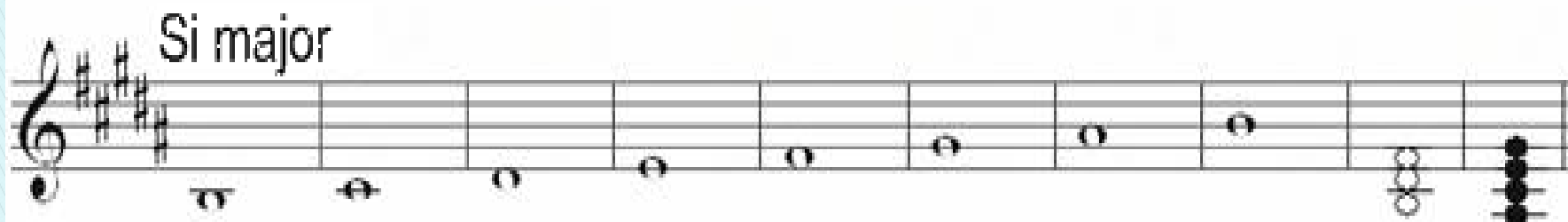


Mi major



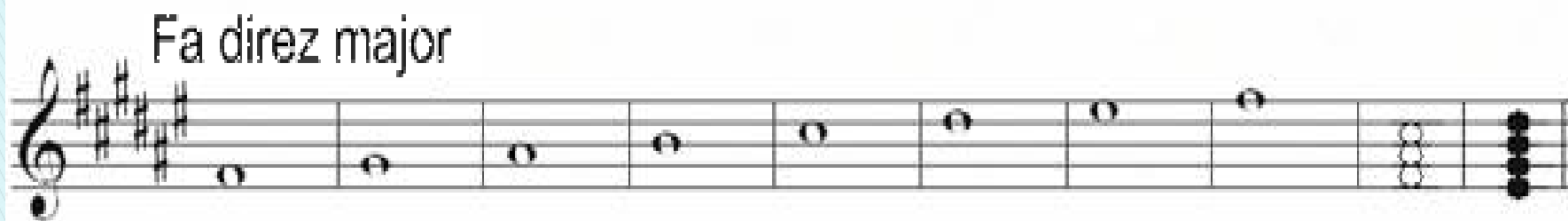
Musical notation for the Mi major scale (E major) in treble clef. The key signature has three sharps (F#, C#, G#). The scale is written as a sequence of whole notes: E4, F#4, G#4, A4, B4, C#5, D5, E5. The final measure shows a triad of E4, G#4, and B4, followed by a barre across all strings.

Si major



Musical notation for the Si major scale (B major) in treble clef. The key signature has two sharps (F#, C#). The scale is written as a sequence of whole notes: B3, C#4, D4, E4, F#4, G#4, A4, B4. The final measure shows a triad of B3, D4, and F#4, followed by a barre across all strings.

Fa direz major



Musical notation for the Fa direz major scale (F# major) in treble clef. The key signature has four sharps (F#, C#, G#, D#). The scale is written as a sequence of whole notes: F#3, G#3, A4, B4, C#5, D#5, E5, F#5. The final measure shows a triad of F#3, A4, and C#5, followed by a barre across all strings.

Do direz major



Musical notation for the Do direz major scale (D major) in treble clef. The key signature has two sharps (F#, C#). The scale is written as a sequence of whole notes: D3, E3, F#3, G#3, A4, B4, C#5, D5. The final measure shows a triad of D3, F#3, and A4, followed by a barre across all strings. The note D5 in the eighth measure is highlighted in blue.

Barcha bemolli tonalliklarning yondosh joylashuvi quyidagi bemolli tonalliklarni hosil qiladi:



Musiqada qo'llaniladigan major tonalliklarining uchta jufti engarmonik jihatdan teng bo'ladi:

The image displays six musical staves, each representing a major scale in a different key. The scales are written in treble clef with a 2/4 time signature. The notes are half notes, and the scales are presented in ascending order. The keys are: Si major (three sharps), Do bemol majorga (two flats), Fa diyez major (three sharps), Sol bemol majorga (two flats), Re bemol major (three flats), and Do diyez majorga (three sharps).

Si major

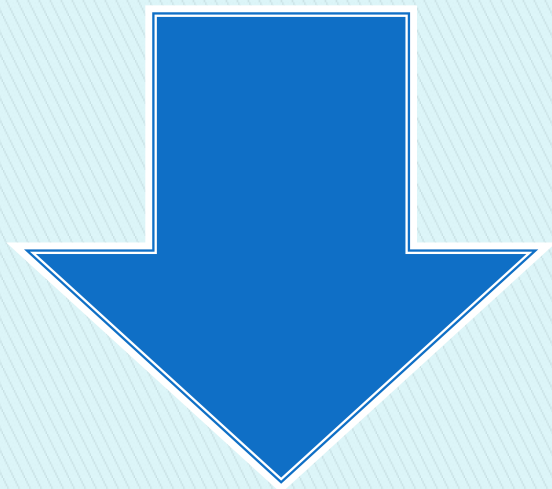
Do bemol majorga

Fa diyez major

Sol bemol majorga

Re bemol major

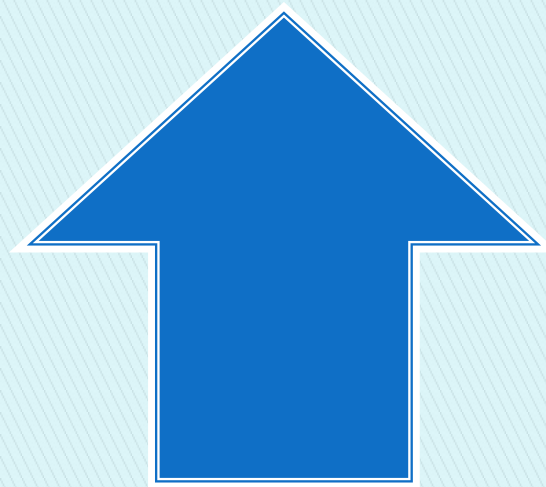
Do diyez majorga



Engarmonik teng tonalliklarning kalit yonida yoziladigan belgilari umumiy yig'indisi 12 tadan iboratdir.



Yuqoriga tomon sof kvinta bo'yicha tuzilgan diyezli va pastga tomon sof kvinta bo'yicha tuzilgan bemolli major tonalliklarining joylashuv tartibi kvinta davrasi deyiladi.



C - dur

