


# INTERVALLAR

# INTERVALLAR

- ◉ Tarkibli intervallar
- ◉ oddiy intervallarni oktavaga qo'shish
- ◉ Ohangdosh (konsonans) intervallar
- ◉ noohangdosh (dissonans) intervallar

# TARKIBLI INTERVALLAR

Musiqqa amaliyotida oddiy intervallardan tashqari, oralig'i oktavadan keng bo'lgan intervallar ham qo'llaniladi.

A diagram consisting of two rounded rectangular boxes. The left box is purple and contains text. The right box is orange and contains text. A purple arc connects the top of the purple box to the top of the orange box. An orange arc connects the bottom of the orange box to the bottom of the purple box. The background is white with a purple vertical bar on the right side.

Oralig'i bir  
oktavadan keng  
bo'lgan intervallarga  
**tarkibli intervallar**  
deyiladi.

Tarkibli intervallar  
oddiy intervallarni  
oktavaga qo'shish  
yo'li bilan hosil  
bo'ladi.

# HAR BIR TARKIBLI INTERVAL UNING TARKIBIDAGI POG'ONALAR SONIGA QARAB QUYIDAGI MUSTAQIL NOMLAR BILAN ATALADI:

Nona - 9, oktava  
orqali tuzilgan  
sekunda;

Detsima - 10,  
oktava orqali  
tuzilgan  
tertsiya;

Undetsima -11,  
oktava orqali  
tuzilgan kvarta;

Duodetsima -  
12, oktava  
orqali tuzilgan  
kvinta;

Tertsdetsima -  
13, oktava  
orqali tuzilgan  
seksta;

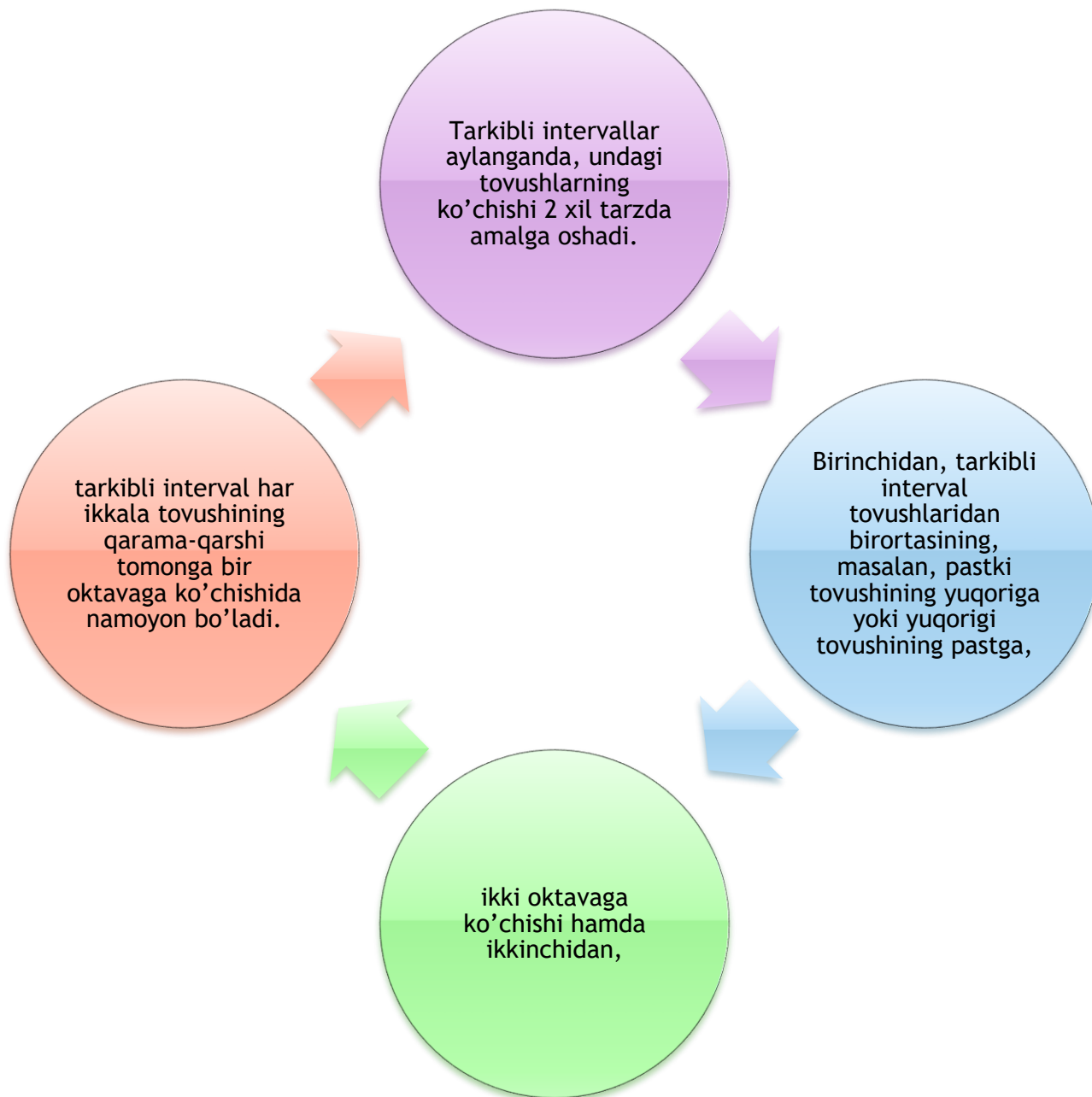
Kvartdetsima -  
14, oktava  
orqali tuzilgan  
septima;

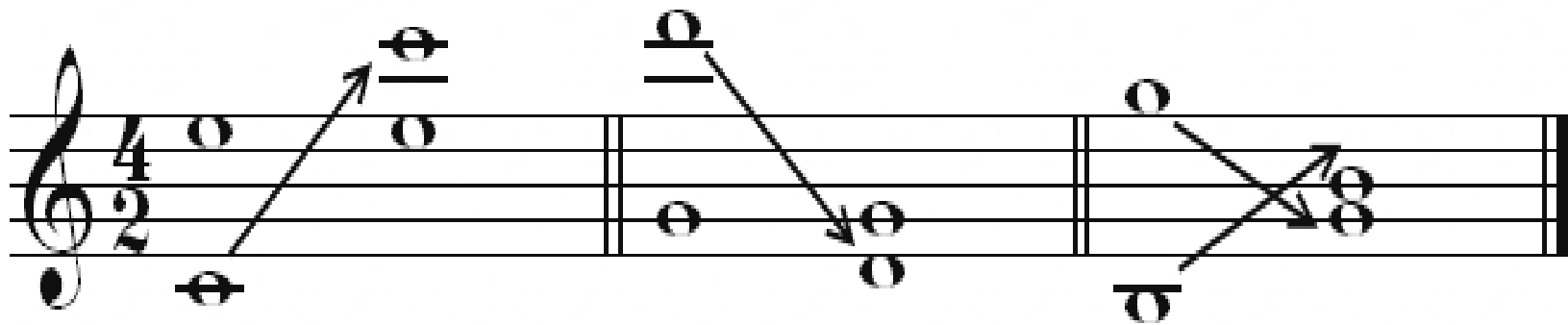
Kvintdetsima -  
15, oktava  
orqali tuzilgan  
oktava.

A musical staff in 4/4 time with a treble clef. The staff contains seven measures, each with a single note on the first line (F4). The notes are: 9 (no fret), 10 (1st fret), 11 (2nd fret), 12 (3rd fret), 13 (4th fret), 14 (5th fret), and 15 (6th fret). The notes for frets 14 and 15 are underlined. Below the staff, the fret numbers 9 through 15 are listed under their respective measures.

9	10	11	12	13	14	15
---	----	----	----	----	----	----





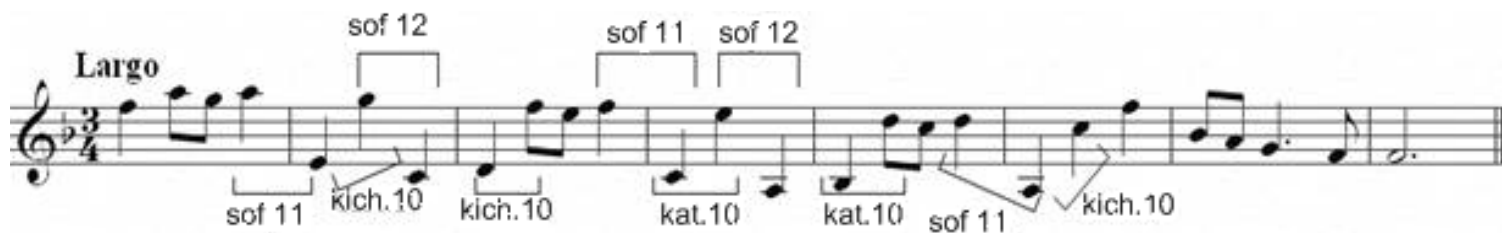


kat.10 kich.6 sof 12 sof 4 kich.13 kat.3

# TARKIBLI INTERVALLARGA MISOLLAR:



A musical staff in treble clef, key of D major (one sharp), and 3/4 time signature. The melody consists of quarter notes: D4, E4, F#4, G4, A4, B4, C5, B4, A4, G4, F#4, E4, D4. Brackets above the staff indicate intervals: 'kat.10' between D4 and G4, and 'sof 12' between G4 and B4. Brackets below the staff indicate intervals: 'kat.10' between D4 and G4, 'sof 12' between G4 and B4, and 'kich.14' between D4 and C5.



A musical staff in treble clef, key of B minor (two flats), and 3/4 time signature. The tempo marking 'Largo' is present. The melody consists of quarter notes: B3, A3, G3, F3, E3, D3, C3, B2, A2, G2, F2, E2, D2, C2, B1. Brackets above the staff indicate intervals: 'sof 12' between B3 and E3, 'sof 11' between E3 and A3, and 'sof 12' between A3 and D4. Brackets below the staff indicate intervals: 'sof 11' between B3 and A3, 'kich.10' between A3 and G3, 'kich.10' between G3 and F3, 'kat.10' between F3 and E3, 'kat.10' between E3 and D3, 'sof 11' between D3 and C3, and 'kich.10' between C3 and B2.

# OHANGDOSH (KONSONANS) VA NOOHANGDOSH (DISSONANS) INTERVALLAR

Zamonaviy musiqada har qanday diatonik shakldagi garmonik intervallar ohangdosh yoki noohangdosh intervallarga bo'linadi.

Musiqada ohangdoshlik (*konsonans*) deb bir-biri bilan uyg'unlashgan, ohangdosh bo'lib eshitilgan tovushlar yangrashi, yig'indisiga aytiladi.

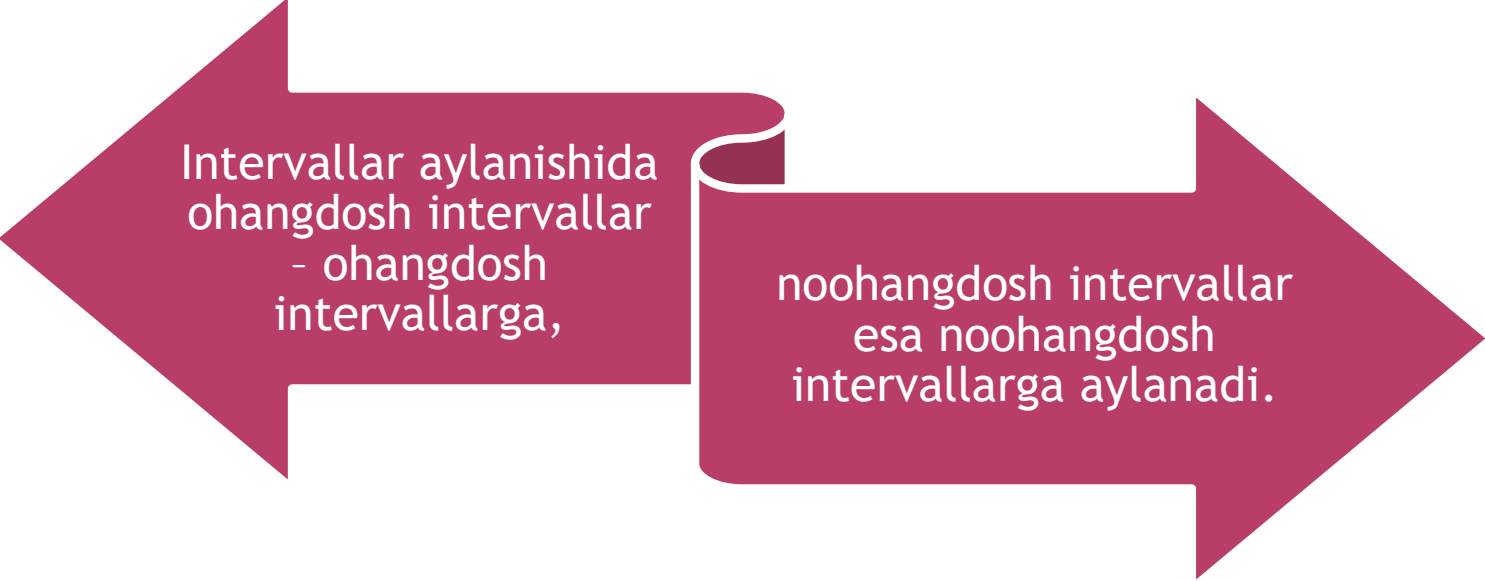
Noohangdoshlik (*dissonans*) deb bir-biri bilan uyg'unlashmagan, keskin eshitiladigan tovushlarga aytiladi.

# OHANGDOSH INTERVALLARGA QUYIDAGILAR KIRADI:

a)	sof prima	<b>Eng mukammal ohangdoshlar</b>
	sof oktava	
b)	sof kvarta	<b>Mukammal ohangdoshlar</b>
	sof kvinta	
v)	kichik tertsiya	<b>Nomukammal ohangdoshlar</b>
	katta tertsiya	
	kichik seksta	
	katta seksta	

# NOOHANGDOSH INTERVALLARGA QUYIDAGILAR KIRADI:

kichik sekunda	orttirilgan kvarta
katta sekunda	kamaytirilgan kvinta
	kichik septima
	katta septima



Intervallar aylanishida  
ohangdosh intervallar  
- ohangdosh  
intervallarga,

noohangdosh intervallar  
esa noohangdosh  
intervallarga aylanadi.

# MAVZUNI MUSTAHKAMLASH UCHUN SAVOLLAR

- Konsonans atamasining lug'aviy ma'nosini tushuntiring.
- Dissonans atamasi qanday ma'noni anglatadi?
- Ohangdosh intervallarga qaysilar kiradi?
- Noohangdosh intervallarni sanab bering.
- Kamaytirilgan kvinta qaysi intervallar guruhiga kiradi?
- Nomukammal ohangdosh intervallarni sanab bering.